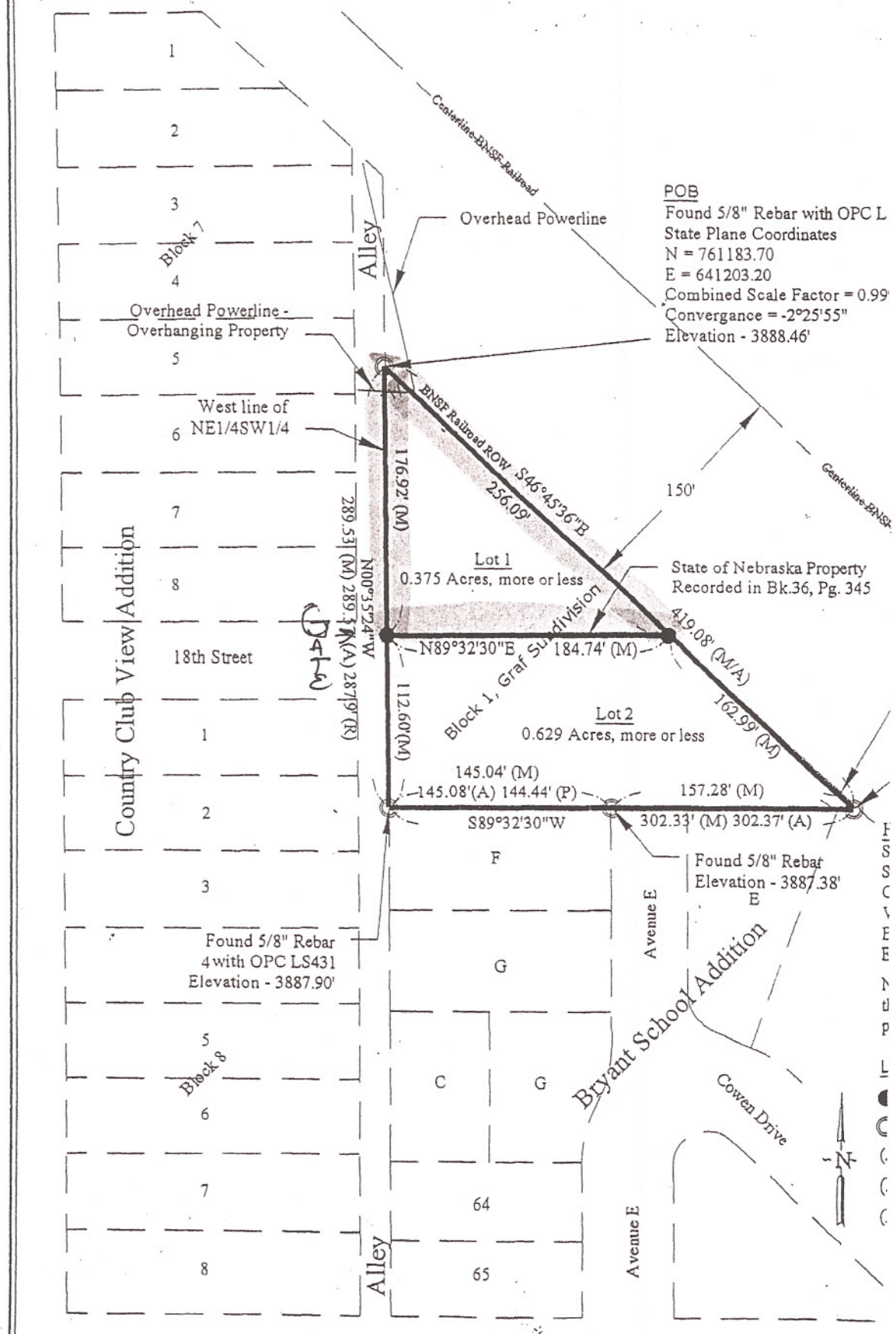


ZONE CHANGE R-1A to C-3

Lots 1 and 2, Block 1, Graf Addition to the City of Scottsbluff, Scotts Bluff County, Nebraska.



POB
 Found 5/8" Rebar with OPC L
 State Plane Coordinates
 N = 761183.70
 E = 641203.20
 Combined Scale Factor = 0.99
 Convergence = -2°25'55"
 Elevation - 3888.46'

Found 5/8" Rebar
 Elevation - 3887.38'
 E

Found 5/8" Rebar
 4 with OPC LS431
 Elevation - 3887.90'

H
I
S
C
I
V
E
R
Y
P
L
C
C
C

